

# BUSINESSOBJECTS DATA INTEGRATOR

**IT Benefits**

Correlate and integrate data from any source

Efficiently design a bulletproof data integration process

Accelerate time to market

Move data in real time and at any interval

Accelerate large data volume movement

Improve developer productivity

Easily manage change and metadata from disparate systems

**Business Benefits**

Receive trusted information

Gain a single view of your organization

Improve the accuracy of your information

Perform trending and analysis

Get timely information

Lower total deployment costs

## DELIVERING TRUSTED DATA FOR YOUR ENTERPRISE

As the number of enterprise data sources and volumes continues to grow rapidly, organizations that can manage and harness their data hold a strategic competitive advantage.

To gain control over your data, you need to build an agile and trusted data foundation that can rapidly respond to the information demands of the business for initiatives such as business intelligence (BI), enterprise resource planning (ERP), customer relationship management (CRM), and data migration. Such a foundation requires data integration capabilities that can help you deliver integrated and trusted information to the enterprise.

BusinessObjects™ Data Integrator from Business Objects, an SAP company, is a market-leading, enterprise-class data integration tool that allows your organization to easily explore, extract, transform, and deliver data anywhere, at any frequency.

Data Integrator delivers timely, accurate, and trusted data across the enterprise. With Data Integrator, you can:

- Provide the most trusted information
- Deploy with the fastest time to market
- Deliver enterprise-class performance

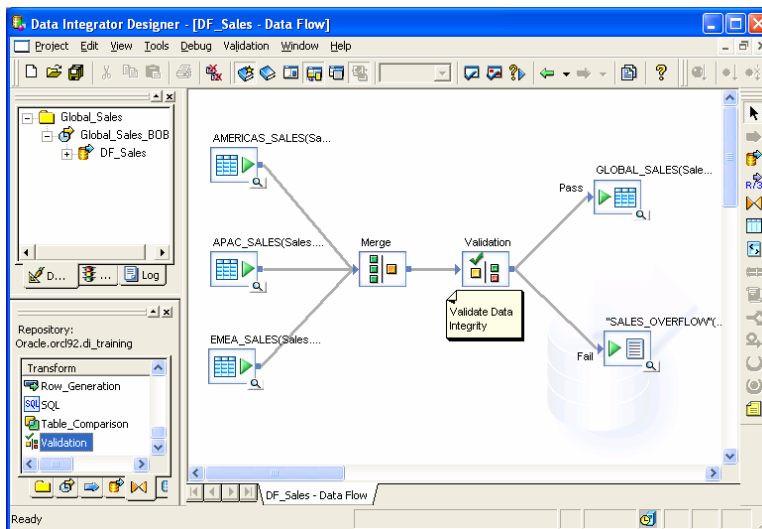


Figure 1: BusinessObjects Data Integrator Offers an Easy-to-Use Interface and Drag-and-Drop Development

## PROVIDE THE MOST TRUSTED INFORMATION

Compliance regulations require organizations to deliver timely, accurate, and auditable information. To meet these challenges, organizations need a single view of their enterprise metadata, improved data quality, visibility into the impact of source changes, and traceability of data back to the source systems.

BusinessObjects Data Integrator ensures the quality of your enterprise data with advanced data profiling, which allows you to understand the content, structure, quality, and relationships

between tables in your source data. The data validation feature helps you build a firewall between your source and target systems, so you can filter out unwanted data based on your business rules. Data Integrator audits data throughout the extraction, transformation, and load (ETL) process to verify the integrity of the data flowing through, and additional data quality capabilities to cleanse data of any operational domain (such as customer, product, or service) are easily accessible with data services.

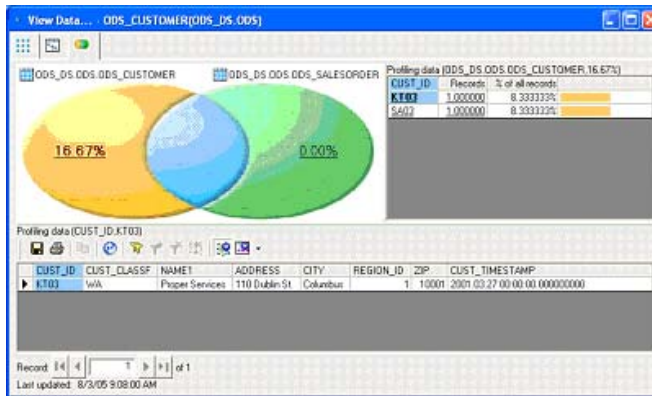


Figure 2: Data Profiling Enables You to View and Analyze the Relationships Between Two Tables in Your Data Sources

## Impact Analysis

From an IT perspective, BusinessObjects Data Integrator provides the ability to see how a change in your source data can affect both the ETL and BI environment. It is also unique in its ability to interchange metadata with the BusinessObjects BI layer. This metadata integration provides end-to-end impact analysis that allows you to see the effect of changes in the source systems down to the BI reports. As a result, you can easily manage change in your entire ETL and BI environment.

## Data Lineage

From a business perspective, a huge benefit of metadata integration is data lineage, which allows BI users to view the context of data in their BI reports. Your users can see when data was updated, how it was computed, and where it came from – all the way back to the original transactional source. This visibility is critical to help your users gain better trust in their information.

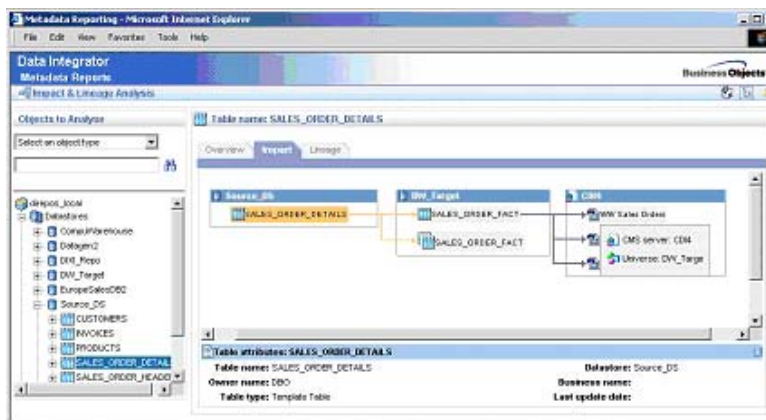


Figure 3: Impact Analysis Lets You See the Impact of Changes in Your Data Source to Your Entire BI Environment

## DEPLOY WITH THE FASTEST TIME TO MARKET

Data Integrator can significantly simplify and reduce your IT efforts by providing an intuitive development environment to handle all tasks associated with building an ETL process. Business Objects also offers prebuilt data integration solutions for source-specific enterprise applications to accelerate your BI deployment.

### BusinessObjects Composer

BusinessObjects Composer is an intuitive Web-based tool for ETL mapping. With Composer, you can easily manage the design phase of an ETL job. Collaborate with a team to gather

business requirements, profile your source data, build ETL mappings, validate the accuracy of your design, generate data integration jobs, and document your project.

**BusinessObjects  
Data Integrator  
Features**

**Trusted  
Information  
BusinessObjects  
Metadata Manager**

Data quality firewall

Data profiling

Data cleansing

Data validation

Data auditing

End-to-end impact  
analysis

End-to-end data  
lineage

**IT Productivity  
BusinessObjects  
Composer**

Single development  
environment

Secure, multi-user  
developer  
collaboration

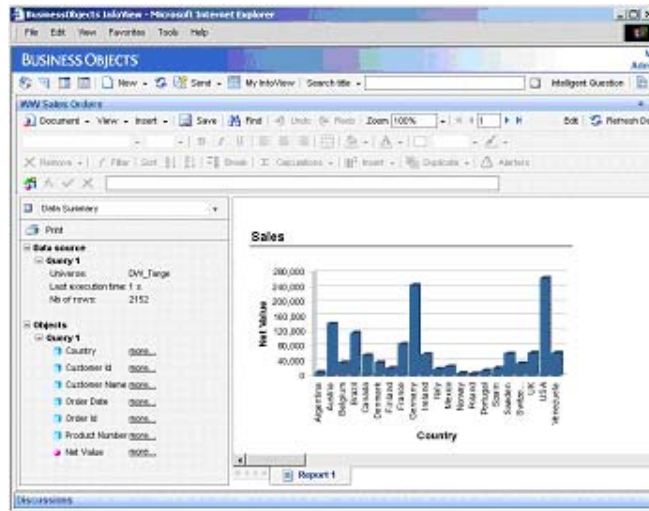
Complete end-to-  
end metadata  
analysis

**Scalable  
Architecture  
Parallel processing**

Intelligent push-  
down processing

Grid computing  
support

Broad source and  
target support



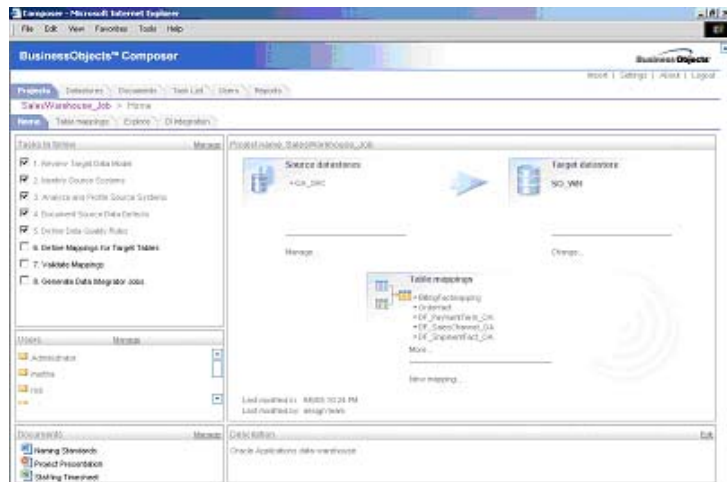
*Figure 4: BI Users Gain Trusted Information with the Ability to See Data Lineage Within Their BI Reports*

**Single Development Environment**

With Data Integrator, you can accelerate and simplify development efforts by building and managing data integration jobs within a single graphical environment. The drag-and-drop user interface allows you to quickly build jobs that profile, validate, audit, cleanse, transform, and move data. Advanced debugging features let you analyze problematic data through the entire ETL process. The smart documentation capability saves you from having to manually document your work.

**Powerful Prebuilt Transforms**

With Data Integrator, you can perform a complete range of data transformations. Choose from a library of powerful, extensible, and reusable transforms for operations, such as unstructured data (via BusinessObjects Text Analysis), hierarchy flattening for XML files, XML pipelining, pivot and reverse-pivot of rows and columns, slowly changing dimensions, change data capture, data validation, and data cleansing (via BusinessObjects Data Services).



*Figure 5: Using Composer, a Team of IT Professionals, Developers, and Business Analysts Can Collaborate to Design a High Quality Data Integration Process for Loading a Data Warehouse*

**Multi-Developer Collaboration**

Data Integrator offers complete functionality for team-based development and allows users to securely check work in and out of a central metadata repository. Your users can share and version their work to accelerate development. And you can easily compare differences between objects.

## Design Once, Deploy Many

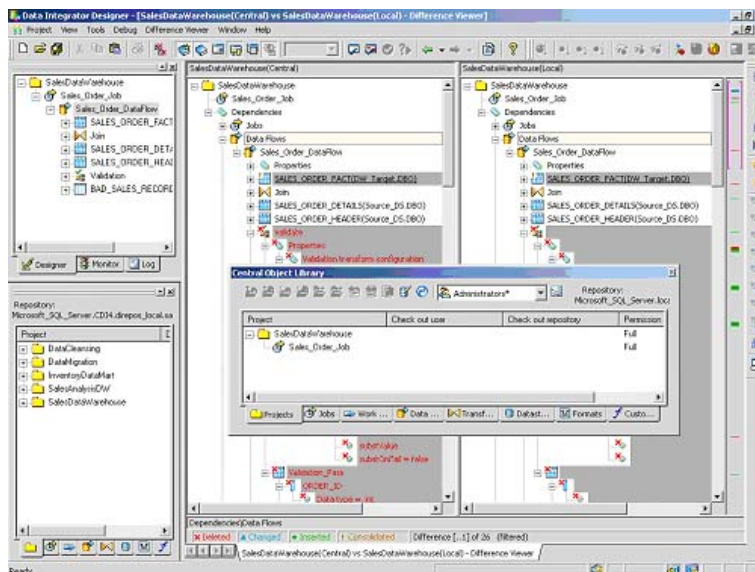
Data Integrator jobs are portable to different database types, versions, and instances – so developers can design an ETL job once and port it to any database environment, accelerating deployment.

## BI Metadata Integration

By deeply integrating the ETL process with the BI product used in your data warehousing project, both your IT and business users gain measurable benefits such as easy metadata management, simplified and unified administration, improved lifecycle management, and reduced maintenance costs. Using Data Integrator, you can automatically create and update a Business Objects semantic layer (that is, a Business Objects universe) to accelerate BI deployment and simplify change management.

## BusinessObjects Rapid Marts

BusinessObjects Rapid Marts™ are packaged, powerful, and flexible data integration solutions for delivering information from enterprise applications, such as SAP, Oracle, PeopleSoft, J.D. Edwards, and Siebel. Built with BusinessObjects Data Integrator, Rapid Marts provide domain knowledge with data integration best practices to deliver an application-specific data mart, Business Objects semantic layer (Business Objects universe), and BI reports. Rapid Marts are available in these key domain areas: financials, human resources, order management, and purchasing. Using Rapid Marts, you gain rapid insight, accelerate your BI deployment, and lower development costs.



*Figure 6: Multiple Developers Can Collaborate and Securely Check Objects In and Out of a Central Repository and View Differences Between Versions*

## DELIVER ENTERPRISE-CLASS PERFORMANCE

As volumes of data rise and accepted delays drop, you need to be able to rely on a high-performance, scalable data integration solution. Data Integrator delivers extreme ETL scalability with support for parallel processing, distributed processing, real-time data movement, and broad source and target support. This open and services-based architecture allows you to integrate with third-party products using industry standard protocols such as common warehouse metamodel (CWM), XML, HTTP/HTTPS, JMS, SNMP, and Web services.

## Parallel Processing

The Data Integrator performance architecture meets the scalability requirements for today's ever-increasing data volumes and shrinking data load windows. Data Integrator provides intelligent threading, which enables parallelization in several ways. Within a single data transformation, it can dynamically launch multiple threads. In a single job, multiple transformations and job steps can run in a parallel structure. Multiple jobs can run

simultaneously through multiple instances of the Data Integrator job engine. Through a grid computing implementation, multiple job servers can run concurrently to balance workload and maintain high system availability.

### **Pushdown Processing**

Data Integrator maximizes data integration performance by intelligently pushing the processing down to the database or mainframe platforms. For example, Data Integrator will leverage your database server to aggregate functions at the source level without moving the data to the Data Integrator server. With the ability to distribute processing to your source systems, Data Integrator minimizes unnecessary data movement across your network to optimize data integration performance.

### **Broad Source and Target Support**

Data Integrator can help you connect to your data (structured or unstructured) whether it resides in a relational database, mainframe system, or packaged application. Through Data Integrator, you can take a text string and extract it to a structured format via BusinessObjects Text Analysis. In addition, no other product provides deeper metadata-based connectivity to packaged applications from SAP, Siebel, PeopleSoft, J.E. Edwards, and Oracle applications. Native connectivity is available for virtually all database types or through ODBC. You can access legacy mainframe applications. Data Integrator also supports flat files, XML, and Web services. If your application is proprietary, you can connect to it using a Java software development kit (SDK).

### **Services-Based Architecture**

Data Integrator offers comprehensive support for Web services and is Web Services Interoperability (WS-I) compliant. You can publish or call a batch or real-time data integration job via Web services. Data Integrator also calls Web service-enabled applications to easily access virtually any data. In addition, you can also use Web services to get job status (for example, running, success, or error), logging information (for example, trace, monitor, and error), and start or stop a real-time service.

## **THE BEST CHOICE ON THE MARKET TODAY**

BusinessObjects Data Integrator helps organizations deliver timely, accurate, and trusted information. Through the ability to easily explore, transform, and deliver data, Business Objects provides your organization with trusted and integrated data to support the information needs of your enterprise. To learn more about Data Integrator, visit our Web site at [www.businessobjects.com](http://www.businessobjects.com).

[businessobjects.com](http://businessobjects.com)



© 2008 Business Objects. All rights reserved. Business Objects owns the following U.S. patents, which may cover products that are offered and licensed by Business Objects: 5,555,403; 5,857,205; 6,289,352; 6,247,008; 6,490,593; 6,578,027; 6,831,668; 6,768,986; 6,772,409; 6,882,998; 7,139,766; 7,299,419; 7,194,465; 7,222,130; 7,181,440 and 7,181,435. Business Objects and the Business Objects logo, BusinessObjects, Business Objects Crystal Vision, Business Process On Demand, BusinessQuery, Crystal Analysis, Crystal Applications, Crystal Decisions, Crystal Enterprise, Crystal Insider, Crystal Reports, Desktop Intelligence, Inxight, the Inxight Logo, LinguistX, Star Tree, Table Lens, ThingFinder, Timewall, Let there be light, Metify, NSite, Rapid Marts, RapidMarts, the Spectrum Design, Web Intelligence, Workmail and Xcelsius are trademarks or registered trademarks in the United States and/or other countries of Business Objects and/or affiliated companies. All other names mentioned herein may be trademarks of their respective owners. Part # WS008-C